



Mechanical Test Report

Goal

To mimic a real-world environment that would determine the wear results of the Durasleeve when compared to the competition, in order to establish measurable longevity data.

Test Parameters

Test Material #1: Durasleeve part #: 99199
Test Material #2: Competition part #: 99199
Test Equipment: Custom housing and axle.
RPM: 1725
Seal part number: 472397
Seal dimensions: 2" x 3" x 5/16"
Length of time tested: 3467 hours
Abrasive medium: common road sand

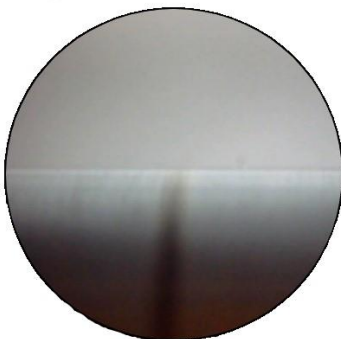
In this test, Dura Sleeve Inc. manufactured a testing apparatus to compare side by side, under the same conditions, the Durasleeve with the competitor's sleeve.

This apparatus consisted of radial lip seals on the counter surface of each sleeve. On the inside of the seals an oil bath of ISO46 and single row ball bearings. On the outside of each seal, the shaft was submerged in common road sand. The apparatus ran for 5 months 24hrs per day or 3467 hours straight.

Test Results

Test Material	Test Duration	Seal integrity	Measurable wear
Durasleeve	3467 hrs	Pass	0.000" / 0.00mm
Competitor	3467 hrs	Fail	0.0047" / 0.12mm

Durasleeve test result



30x magnification

Competition test result

